

IEEE

GEOSCIENCE AND REMOTE SENSING LETTERS

A PUBLICATION OF THE IEEE GEOSCIENCE AND REMOTE SENSING SOCIETY



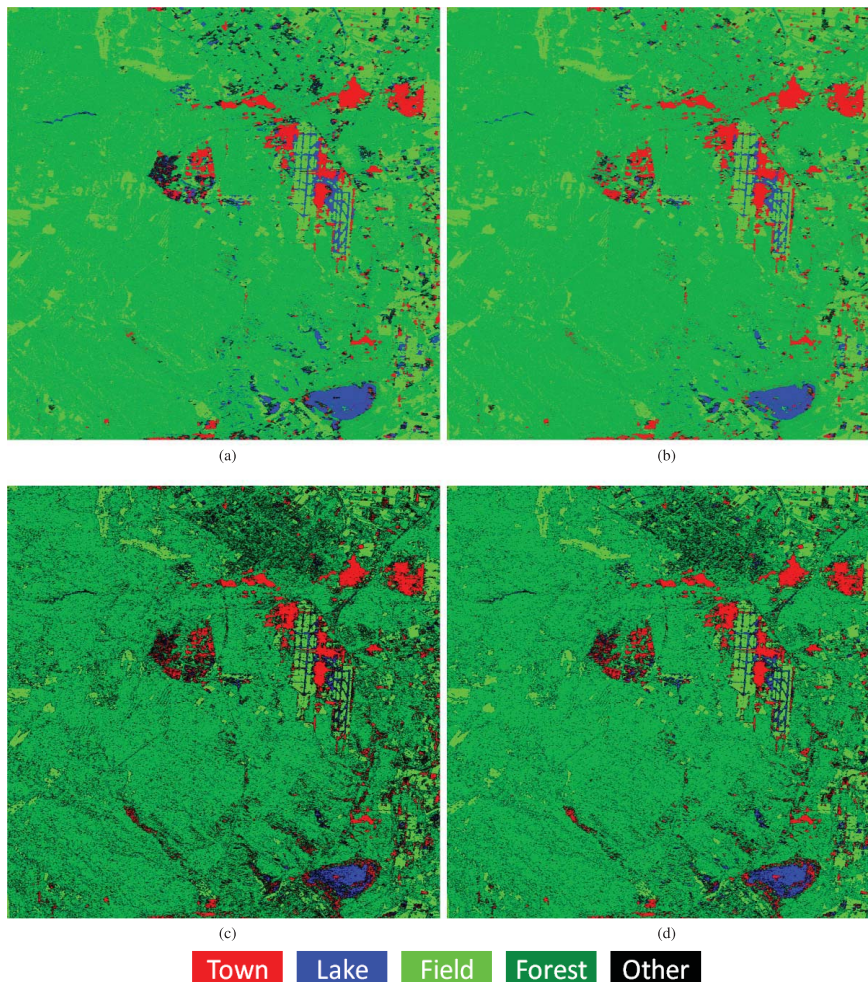
AUGUST 2018

VOLUME 15

NUMBER 8

IGRSBY

(ISSN 1545-598X)



Classification results of ALOS-2 observation for Tomakomai area having $8,000 \times 3,000$ pixels generated by a quaternion neural network (QNN) with a) the conventional activation function f_{conv} and the conventional variation vector σ_{conv} , b) the isotropic activation function f_{iso} and the conventional variation vector σ_{conv} , c) the conventional activation function f_{conv} and the isotropic variation vector σ_{iso} , and d) the isotropic activation function f_{iso} and the isotropic variation vector σ_{iso} , respectively.